

S1DA_Sheet List		
Sheet Number	Sheet Name	Current Revision
S1DA-00-0000	COVER SHEET	D
S1DA-08-0100	ENVELOPE PLAN - GF-L01	C
S1DA-08-0200	ENVELOPE PLANS L02-03	C
S1DA-08-0400	ENVELOPE PLANS L04-31	C
S1DA-20-0200	ELEVATIONS - NORTH AND EAST	D
S1DA-20-0400	ELEVATIONS - SOUTH AND WEST	D
S1DA-30-0100	SECTION	E

Rv	Amendment	By	Ck	Date
D	STAGE 1 DEVELOPMENT APPLICATION	YUQ	SAS	2021-05-05
C	STAGE 1 DEVELOPMENT APPLICATION	ZGO	SAS	2021-03-03
B	STAGE 1 DEVELOPMENT APPLICATION	ZGO	SAS	2021-01-28
A	STAGE 1 DEVELOPMENT APPLICATION	ZGO	SAS	2020-10-12

Key Plan:

Client
KARIMBLA CONSTRUCTION SERVICES (NSW) PTY LTD.

Level 11, Meriton Tower, 528 Kent St, Sydney 2000

Drawing Disclaimer
Do not scale from drawings.
Verify all dimensions on site before commencing work.
Copying or reproduction of this drawing is strictly prohibited without the consent of PTW Architects

Note
PTW takes no responsibility for external building elements. Anything connected with any design, materials selection, construction or installation of any cladding, facade or external building element must be checked by and remains the responsibility of others, including suitably qualified experts as may be required.

Architect
PTW Architects
Level 11, 88 Phillip Street
Sydney NSW 2000 Australia
T +61 2 9232 5877

ptw.com.au

Peddie Thorp & Walker P/L
ABN 23 000 454 624
trading as PTW Architects

NSW Nominated Architects
S Parsons Architect No 6098
D Jones Architect No 4778



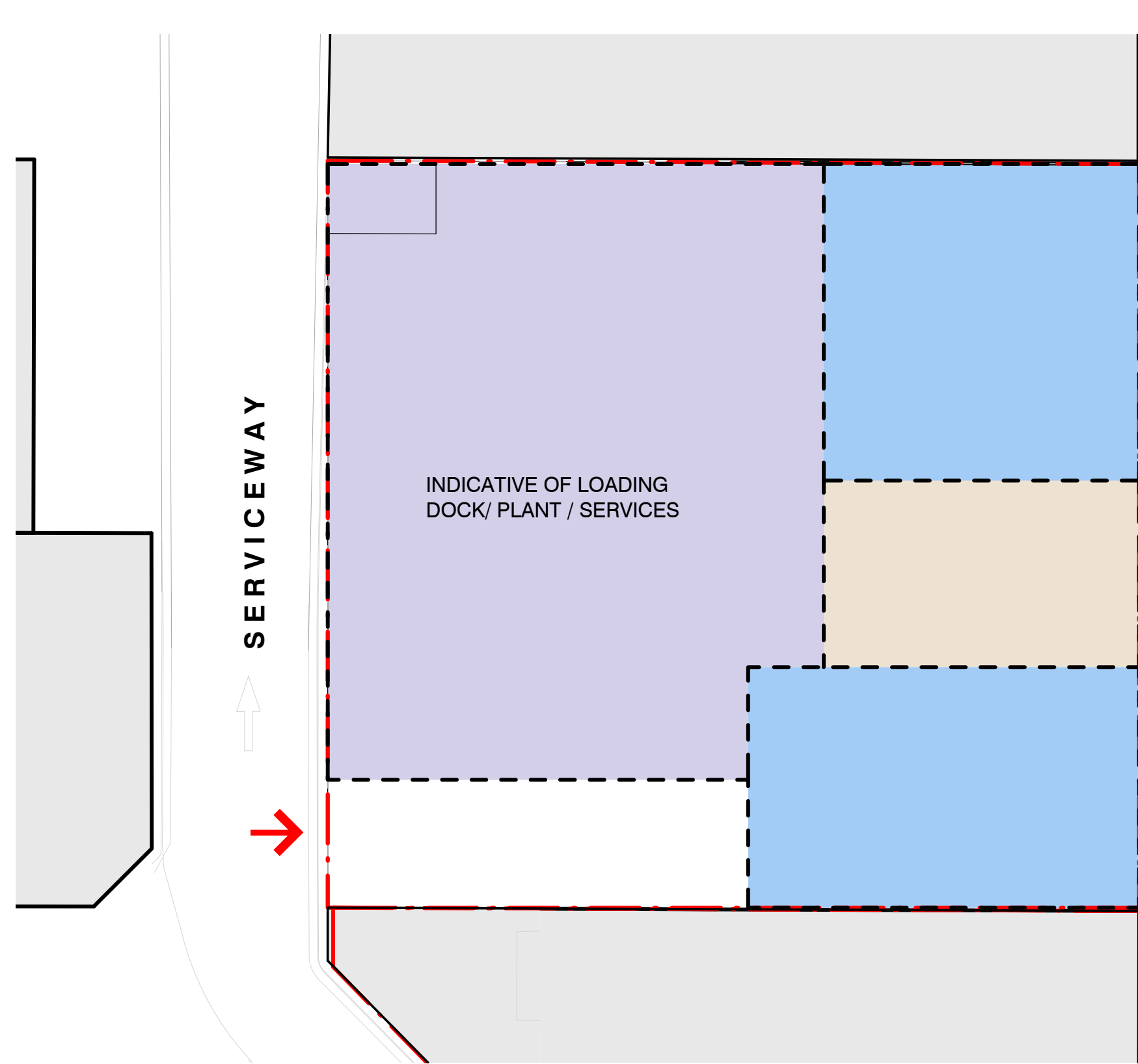
0 1 2 5 8m
Project PA018110
MERITON SUITES
167 Northumberland, Liverpool

Status
STAGE 1 DEVELOPMENT APPLICATION

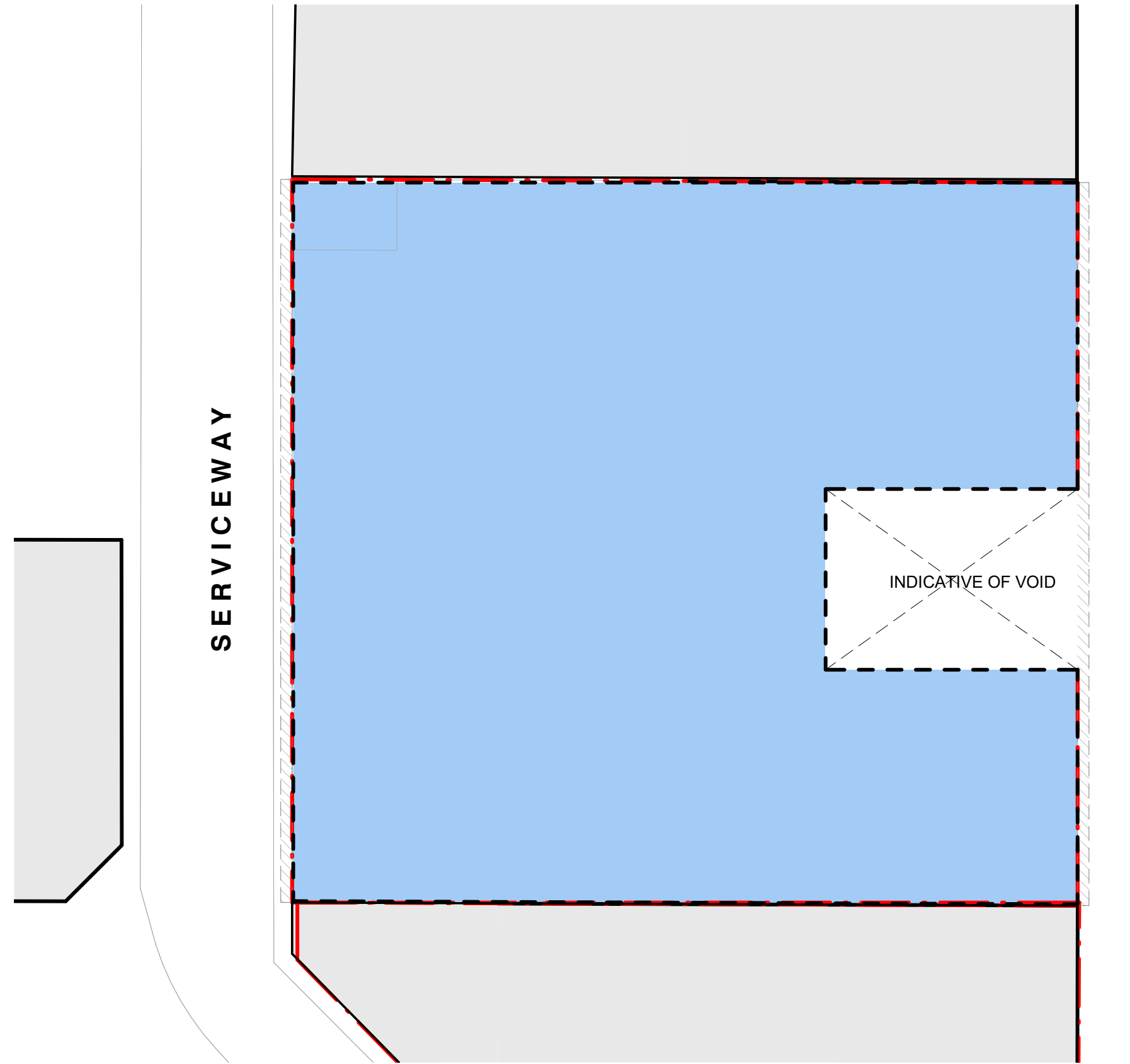
Title
00-CONCEPT
COVER SHEET

Drawing Number
S1DA-00-0000

Revision
D



1 ENVELOPE PLAN - GROUND FLOOR
1 : 250 @A1



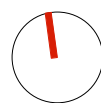
2 ENVELOPE PLAN - LEVEL 01
1 : 250 @A1

LEGEND

- INDICATIVE BUSINESS PREMISES ZONE
- INDICATIVE SERVICED APARTMENTS ZONE
- INDICATIVE CHILDCARE ZONE
- INDICATIVE RECREATIONAL FACILITY ZONE
- INDICATIVE CARPARK/SERVICES ZONE
- INDICATIVE BUILDING ENVELOPE DIMENSIONS
- SETBACK DIMENSIONS
- BUILDING SEPARATION DIMENSIONS
- INDICATIVE ARCHITECTURAL ARTICULATION ZONE
- INDICATIVE CARPARK ENTRY

Rv	Amendment	By	Ck	Date
C	STAGE 1 DEVELOPMENT APPLICATION	ZGO	SAS	2021-03-03
B	STAGE 1 DEVELOPMENT APPLICATION	ZGO	SAS	2021-01-28
A	STAGE 1 DEVELOPMENT APPLICATION	ZGO	SAS	2020-01-17

Key Plan:



Client
KARIMBLA CONSTRUCTION SERVICES (NSW) PTY LTD.
Level 11, Meriton Tower, 528 Kent St, Sydney 2000

Drawing Disclaimer
Do not scale from drawings.
Verify all dimensions on site before commencing work.
Copying or reproduction of this drawing is strictly prohibited without the consent of PTW Architects.
Note
PTW takes no responsibility for external building elements. Anything connected with any design, materials selection, construction or installation of any cladding, facade or external building element must be checked by and remains the responsibility of others, including suitably qualified experts as may be required.

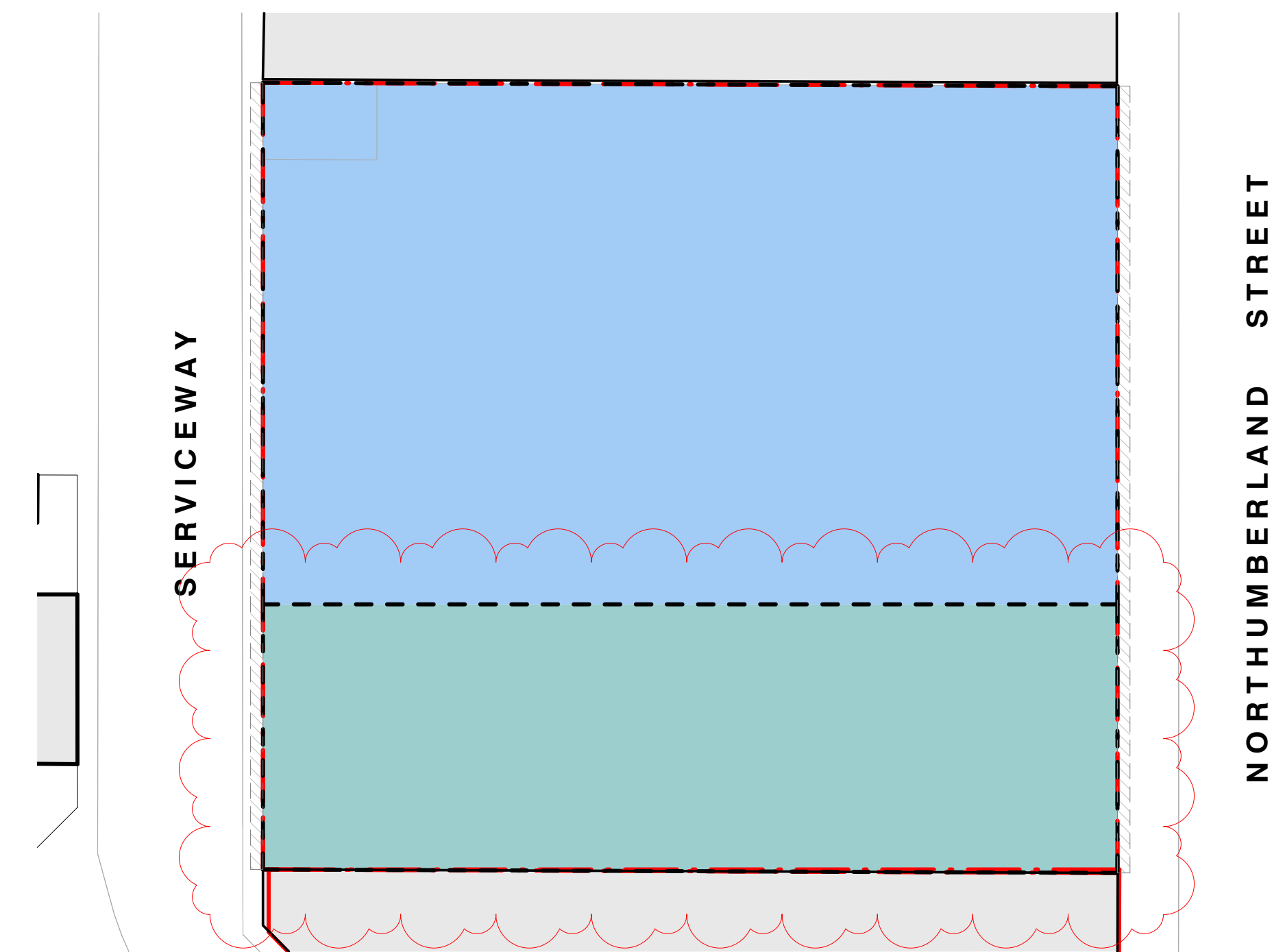
Architect
PTW Architects
Level 11, 88 Phillip Street
Sydney NSW 2000 Australia
T +61 2 9232 5877
ptw.com.au

Peddle Thorp & Walker P/L
ABN 23 000 454 624
trading as PTW Architects
NSW Nominated Architects
S Parsons Architect No.5098
© Jones Architect No.4778

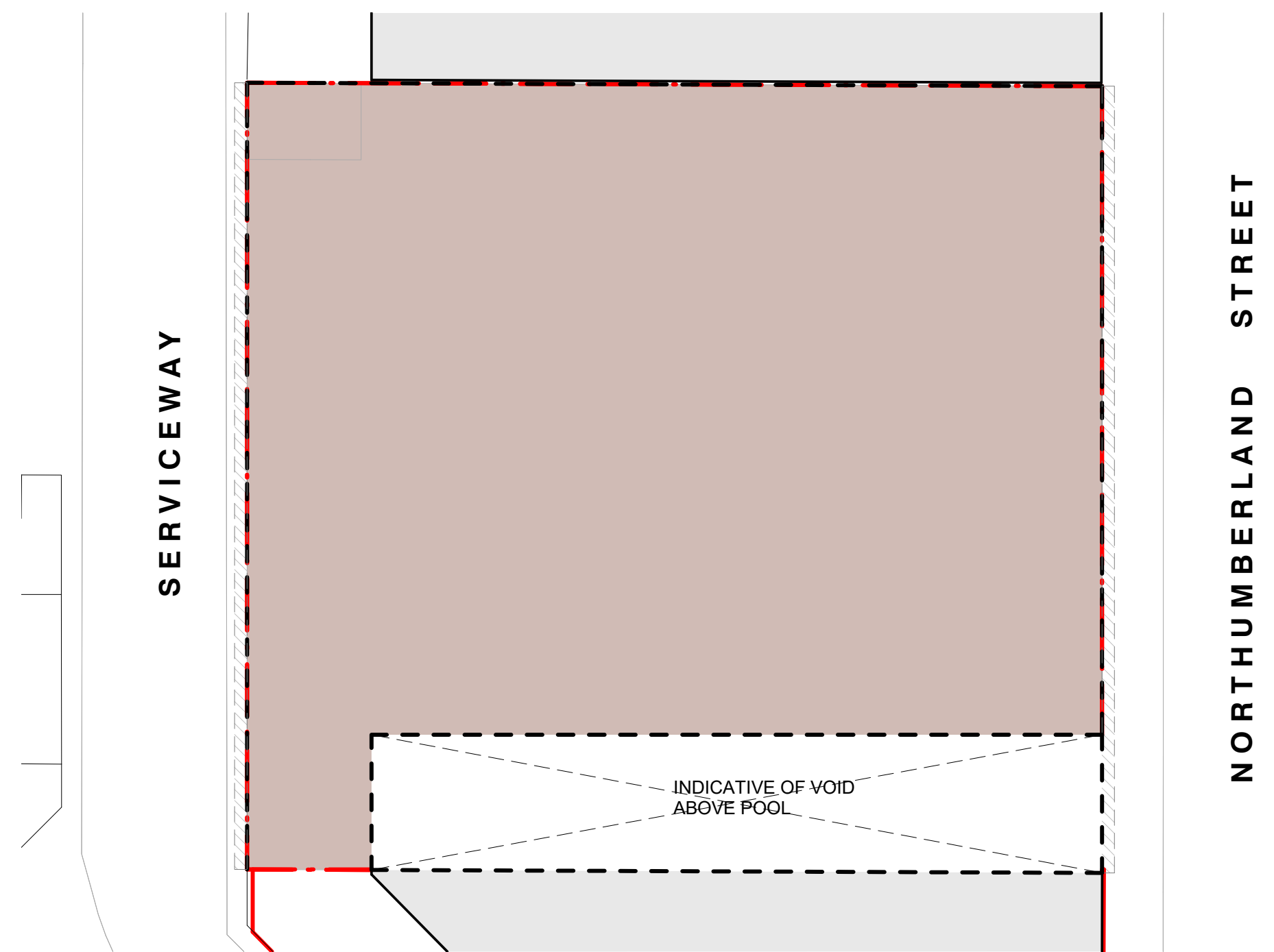
PTW

Project PA018110
MERITON SUITES
167 Northumberland, Liverpool
Status
STAGE 1 DEVELOPMENT APPLICATION

Title
00-CONCEPT
ENVELOPE PLAN - GF-L01
Drawing Number
S1DA-08-0100
Revision
C



2 ENVELOPE PLAN - LEVEL 02
1 : 250 @A1

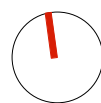


1 ENVELOPE PLAN - LEVEL 03
1 : 250 @A1

- LEGEND
- INDICATIVE BUSINESS PREMISES ZONE
 - INDICATIVE SERVICED APARTMENTS ZONE
 - INDICATIVE CHILDCARE ZONE
 - INDICATIVE RECREATIONAL FACILITY ZONE
 - INDICATIVE CARPARK/SERVICES ZONE
 - INDICATIVE BUILDING ENVELOPE DIMENSIONS
 - SETBACK DIMENSIONS
 - BUILDING SEPARATION DIMENSIONS
 - INDICATIVE ARCHITECTURAL ARTICULATION ZONE
 - INDICATIVE CARPARK ENTRY

Rv	Amendment	By	Ck	Date
C	STAGE 1 DEVELOPMENT APPLICATION	ZGO	SAS	2021-03-03
B	STAGE 1 DEVELOPMENT APPLICATION	ZGO	SAS	2021-01-28
A	STAGE 1 DEVELOPMENT APPLICATION	ZGO	SAS	2020-01-17

Key Plan:



Client
KARIMBLA CONSTRUCTION SERVICES
(NSW) PTY LTD.
Level 11, Meriton Tower, 528 Kent St,
Sydney 2000

Drawing Disclaimer
Do not scale from drawings.
Verify all dimensions on site before commencing work.
Copying or reproduction of this drawing is strictly prohibited
without the consent of PTW Architects.
Note
PTW takes no responsibility for external building elements.
Anything connected with any design, materials selection,
construction or installation of any cladding, facade or external
building element must be checked by and remains the
responsibility of others, including suitably qualified experts as
may be required.

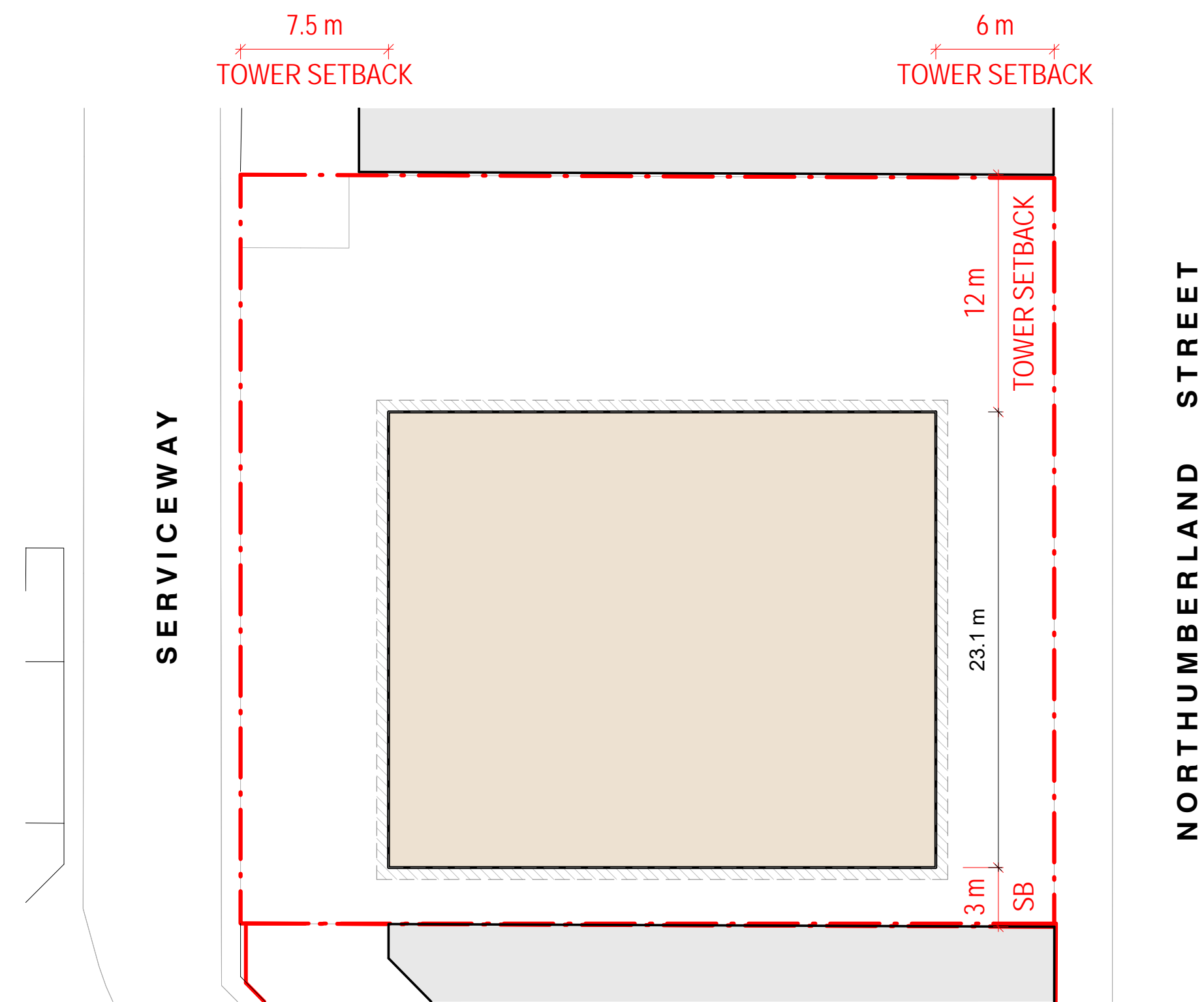
Architect
PTW Architects
Level 11, 88 Phillip Street
Sydney NSW 2000 Australia
T +61 2 9232 5877
ptw.com.au

Peddle Thorp & Walker P/L
ABN 23 000 454 624
trading as PTW Architects
NSW Nominated Architects
S Parsons Architect No.6098
© Jones Architect No.4778

PTW

0 2 5 10 20m
Project PA018110
MERITON SUITES
167 Northumberland, Liverpool
Status
STAGE 1 DEVELOPMENT APPLICATION

Title
00-CONCEPT
ENVELOPE PLANS L02-03
Drawing Number
S1DA-08-0200
Revision
C



1 ENVELOPE PLAN - LEVEL 04-31
1 : 250 @A1

- LEGEND
- INDICATIVE BUSINESS PREMISES ZONE
 - INDICATIVE SERVICED APARTMENTS ZONE
 - INDICATIVE CHILDCARE ZONE
 - INDICATIVE RECREATIONAL FACILITY ZONE
 - INDICATIVE CARPARK/SERVICES ZONE
 - INDICATIVE BUILDING ENVELOPE DIMENSIONS
 - SETBACK DIMENSIONS
 - BUILDING SEPARATION DIMENSIONS
 - INDICATIVE ARCHITECTURAL ARTICULATION ZONE
 - INDICATIVE CARPARK ENTRY

Rv	Amendment	By	Ck	Date
C	STAGE 1 DEVELOPMENT APPLICATION	ZGO	SAS	2021-03-03
B	STAGE 1 DEVELOPMENT APPLICATION	ZGO	SAS	2021-01-28
A	STAGE 1 DEVELOPMENT APPLICATION	ZGO	SAS	2020-01-17

Key Plan:

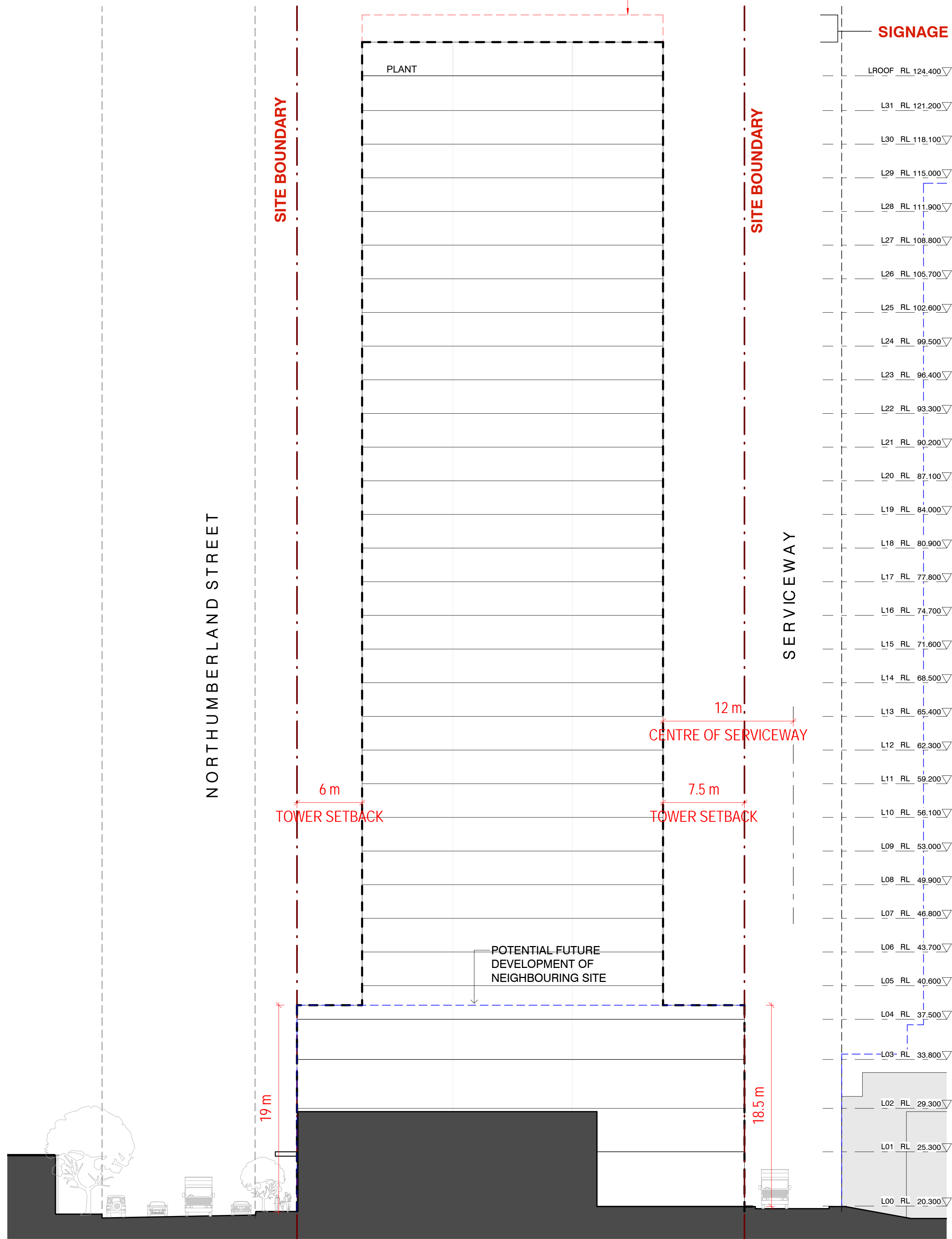
1

Client
KARIMBLA CONSTRUCTION SERVICES (NSW) PTY LTD.
Level 11, Meriton Tower, 528 Kent St, Sydney 2000

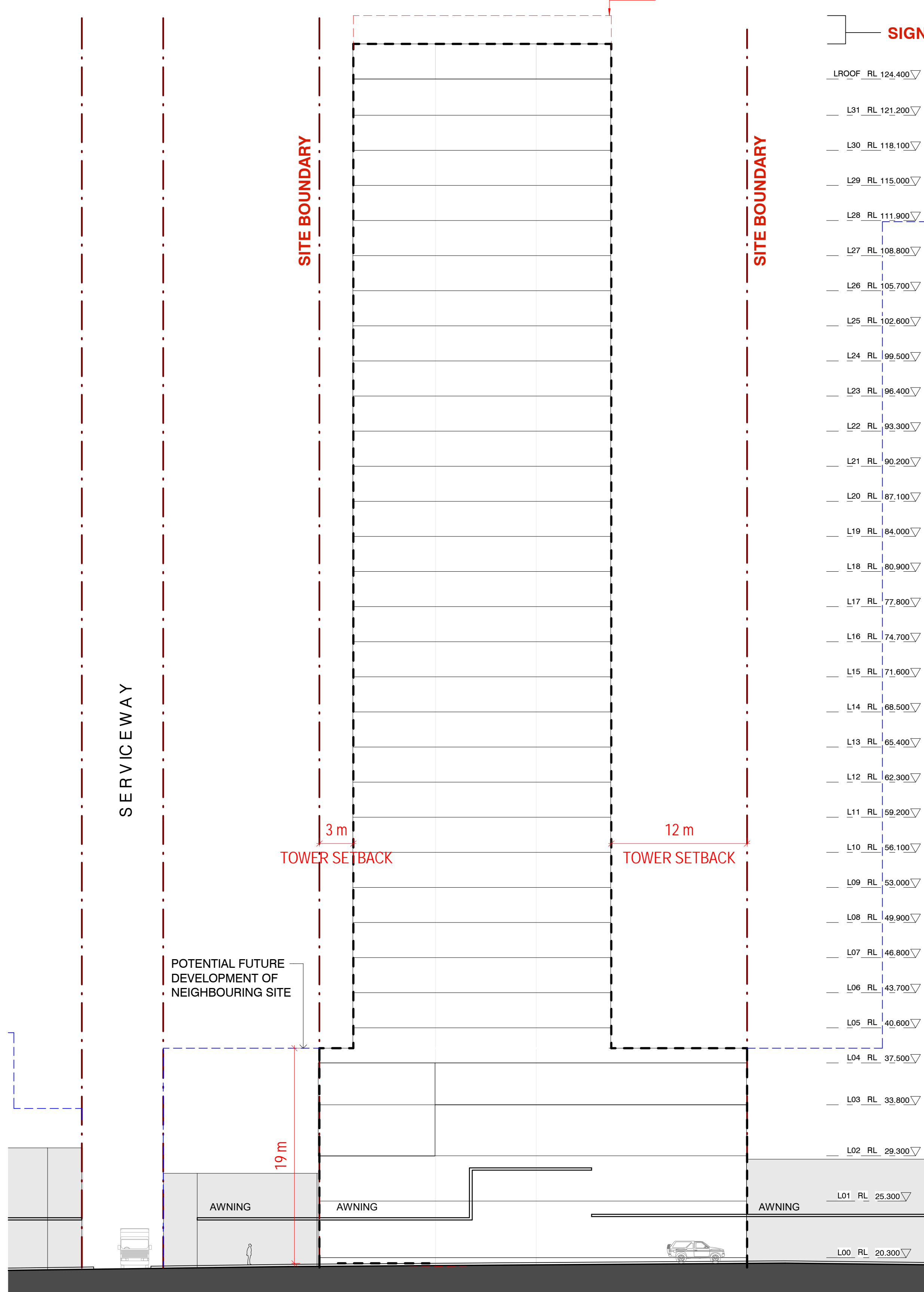
Drawing Disclaimer
Do not scale from drawings.
Verify all dimensions on site before commencing work.
Copying or reproduction of this drawing is strictly prohibited without the consent of PTW Architects.
Note
PTW takes no responsibility for external building elements. Anything connected with any design, materials selection, construction or installation of any cladding, facade or external building element must be checked by and remains the responsibility of others, including suitably qualified experts as may be required.

Architect
PTW Architects
Level 11, 88 Phillip Street
Sydney NSW 2000 Australia
T +61 2 9232 5877
ptw.com.au
Peddle Thorp & Walker P/L
ABN 23 000 454 624
trading as PTW Architects
NSW Nominated Architects
S Parsons Architect No.6098
© Jones Architect No.4778

0 2 5 10 20m
Project PA018110
MERITON SUITES
167 Northumberland, Liverpool
Status
STAGE 1 DEVELOPMENT APPLICATION
Title
00-CONCEPT
ENVELOPE PLANS L04-31
Drawing Number
S1DA-08-0400
Revision
C



1 NORTH ELEVATION
1 : 250 @A1



2 EAST ELEVATION - NORTHUMBERLAND STREET
1 : 250 @A1

Rv	Amendment	By	Ck	Date
D	STAGE 1 DEVELOPMENT APPLICATION	ZGO	SAS	2021-02-02
C	STAGE 1 DEVELOPMENT APPLICATION	ZGO	SAS	2021-01-28
B	STAGE 1 DEVELOPMENT APPLICATION	ZGO	SAS	2020-10-12
A	STAGE 1 DEVELOPMENT APPLICATION	ZGO	SAS	2020-01-17

Key Plan:

Client

KARIMBLA CONSTRUCTION SERVICES
(NSW) PTY LTD.

Level 11, Meriton Tower, 528 Kent St,
Sydney 2000

Drawing Disclaimer
Do not scale from drawings.
Verify all dimensions on site before commencing work.
Copying or reproduction of this drawing is strictly prohibited
without the consent of PTW Architects.

Note
PTW takes no responsibility for external building elements.
Anything connected with any design, materials selection,
construction or installation of any cladding, facade or external
building element must be checked by and remains the
responsibility of others, including suitably qualified experts as
may be required.

Architect
PTW Architects
Level 11, 88 Phillip Street
Sydney NSW 2000 Australia
T +61 2 9232 5877
ptw.com.au

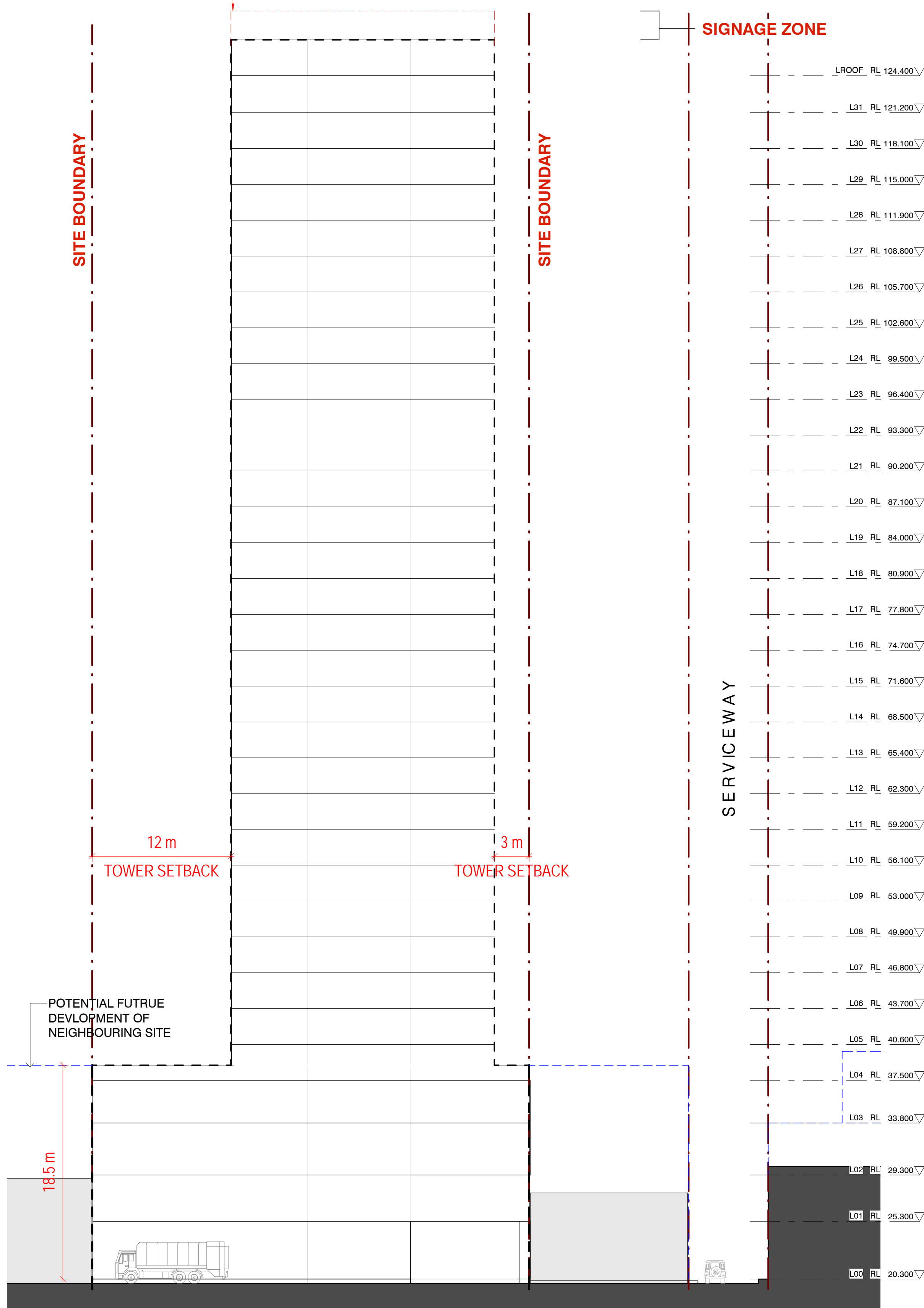
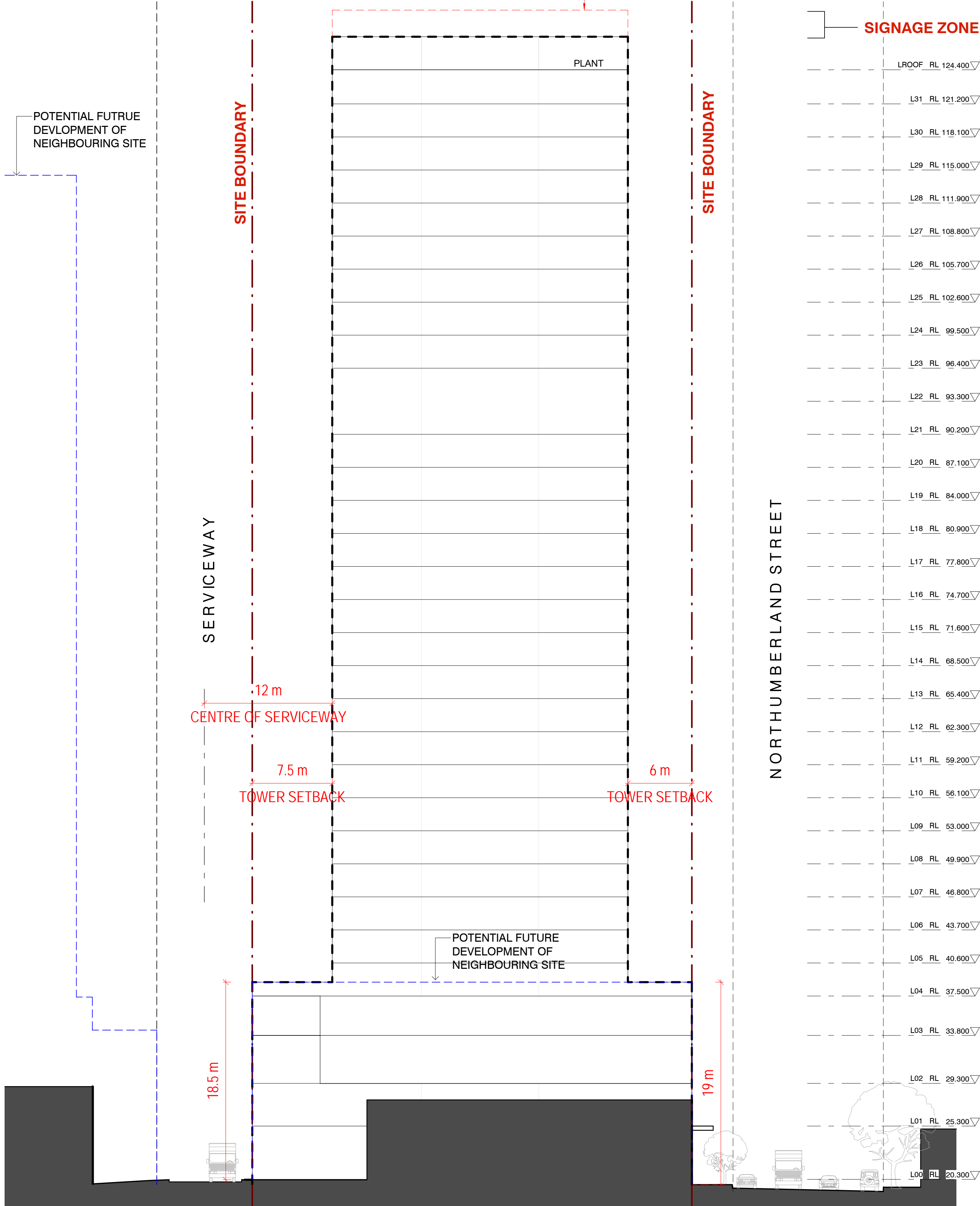
Peddle Thorp & Walker P/L
ABN 23 000 454 624
trading as PTW Architects

NSW Nominated Architects
S Parsons Architect No.5098
D Jones Architect No.4778

PTW

0 2 5 10 20m
Project PA018110
MERITON SUITES
167 Northumberland, Liverpool
Status
STAGE 1 DEVELOPMENT APPLICATION

Title
00-CONCEPT
ELEVATIONS - NORTH AND EAST
Drawing Number
S1DA-20-0200
Revision
D



2 SOUTH ELEVATION
1 : 250 @A1

1 WEST ELEVATION - REAR SERVICEWAY
1 : 250 @A1

Rv	Amendment	By	Ck	Date
D	STAGE 1 DEVELOPMENT APPLICATION	ZGO	SAS	2021-02-02
C	STAGE 1 DEVELOPMENT APPLICATION	ZGO	SAS	2021-01-28
B	STAGE 1 DEVELOPMENT APPLICATION	ZGO	SAS	2020-10-12
A	STAGE 1 DEVELOPMENT APPLICATION	ZGO	SAS	2020-01-17

Key Plan:

Client
KARIMBLA CONSTRUCTION SERVICES
(NSW) PTY LTD.
Level 11, Meriton Tower, 528 Kent St,
Sydney 2000

Drawing Disclaimer
Do not scale from drawings.
Verify all dimensions on site before commencing work.
Copying or reproduction of this drawing is strictly prohibited
without the consent of PTW Architects.
Note
PTW takes no responsibility for external building elements.
Anything connected with any design, materials selection,
construction or installation of any cladding, facade or external
building element must be checked by and remains the
responsibility of others, including suitably qualified experts as
may be required.

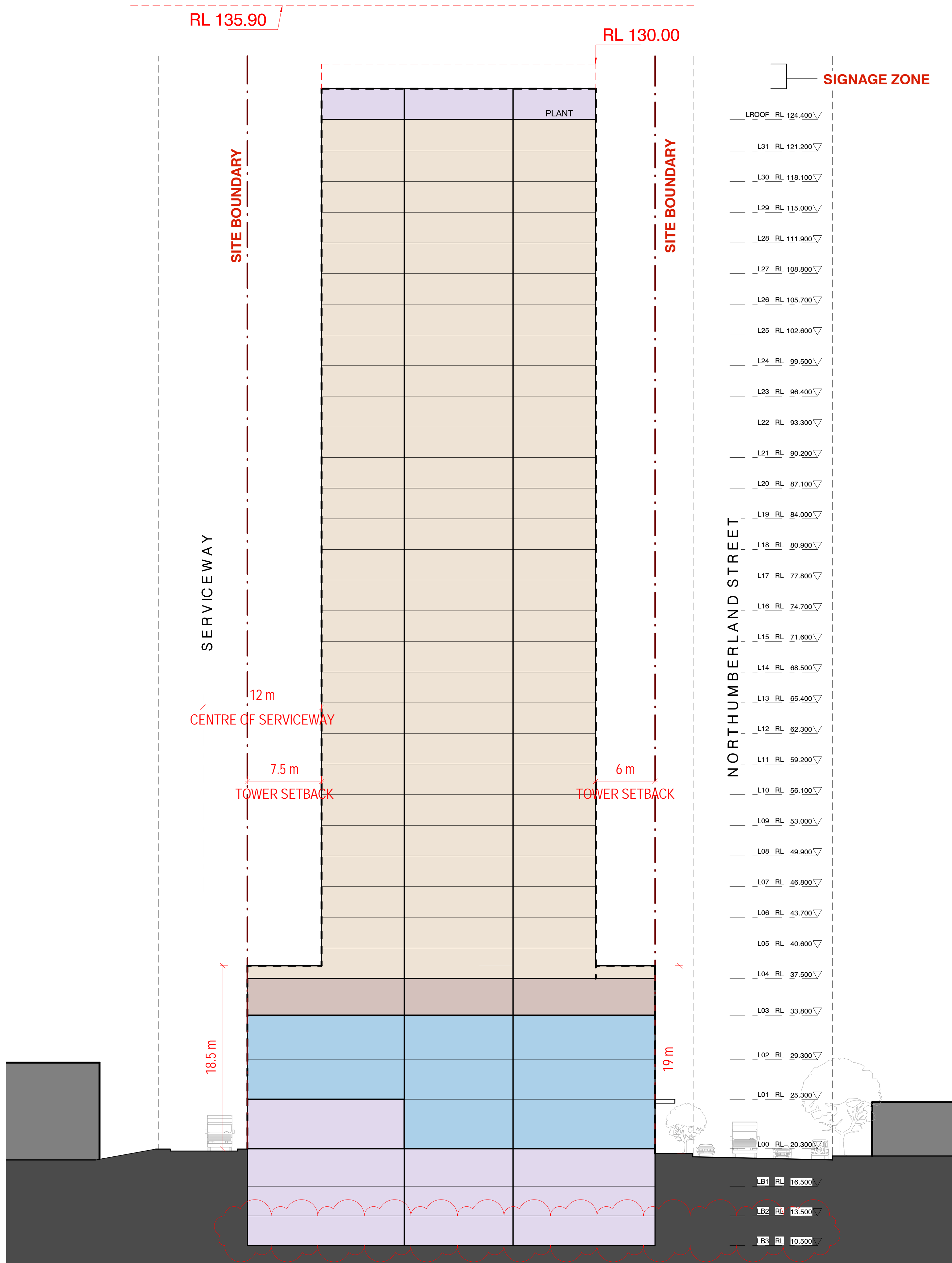
Architect
PTW Architects
Level 11, 88 Phillip Street
Sydney NSW 2000 Australia
T +61 2 9232 5877
ptw.com.au

Peddie Thorp & Walker P/L
ABN 23 000 454 624
trading as PTW Architects
NSW Nominated Architects
S Parsons Architect No.5098
D Jones Architect No.4778

PTW

0 2 5 10 20m
Project PA018110
MERITON SUITES
167 Northumberland, Liverpool
Status
STAGE 1 DEVELOPMENT APPLICATION

Title
00-CONCEPT
ELEVATIONS - SOUTH AND WEST
Drawing Number
S1DA-20-0400
Revision
D



1 SECTION
1 : 250 @A1

Rv	Amendment	By	Ck	Date
E	STAGE 1 DEVELOPMENT APPLICATION	YUQ	SAS	2021-05-05
D	STAGE 1 DEVELOPMENT APPLICATION	ZGO	SAS	2021-03-03
C	STAGE 1 DEVELOPMENT APPLICATION	ZGO	SAS	2021-02-02
B	STAGE 1 DEVELOPMENT APPLICATION	ZGO	SAS	2021-01-28
A	STAGE 1 DEVELOPMENT APPLICATION	ZGO	SAS	2020-01-17

Key Plan:

Client
KARIMBLA CONSTRUCTION SERVICES (NSW) PTY LTD.
Level 11, Meriton Tower, 528 Kent St, Sydney 2000

Drawing Disclaimer
Do not scale from drawings.
Verify all dimensions on site before commencing work.
Copying or reproduction of this drawing is strictly prohibited without the consent of PTW Architects

Note
PTW takes no responsibility for external building elements.
Anything connected with any design, materials selection, construction or installation of any cladding, facade or external building element must be checked by and remains the responsibility of others, including suitably qualified experts as may be required.

Architect
PTW Architects
Level 11, 88 Phillip Street
Sydney NSW 2000 Australia
T +61 2 9232 5877
ptw.com.au

Peddie Thorp & Walker P/L
ABN 23 000 454 624
trading as PTW Architects
NSW Nominated Architects
S Parsons Architect No 6098
D Jones Architect No 4778

PTW

0 2 5 10 20m
Project PA018110
MERITON SUITES
167 Northumberland, Liverpool
Status
STAGE 1 DEVELOPMENT APPLICATION

Title
00-CONCEPT
SECTION
Drawing Number
S1DA-30-0100 E
Revision